

Triage and vital signs devices

Devices and mobile applications that assist with unique identification of victims and show the triage status of patients. The devices offer hands-free functionalities and visualisation of vital signs of patients

DEVICES

DIGITAL TRIAGE TAG
VITAL SIGNS EARPLUG
FIRST RESPONDER WEARABLE
TRIAGE AND VITAL SIGNS APP
AUGMENTED REALITY GLASSES



Intelligent systems

Intelligent systems that enhance situational awareness and operational capacities of emergency teams. The systems provide information about mass casualty incident scenes quickly, supporting fast triage, diagnosis and prognosis of patients whilst allowing optimal utilization of resources and assets

DEVICES

UAV RAPID TRIAGING SYSTEM
THERMAL SCANNING SYSTEM
RESOURCES AND ASSETS OPTIMISATION
DIAGNOSIS AND PROGNOSIS SERVICE

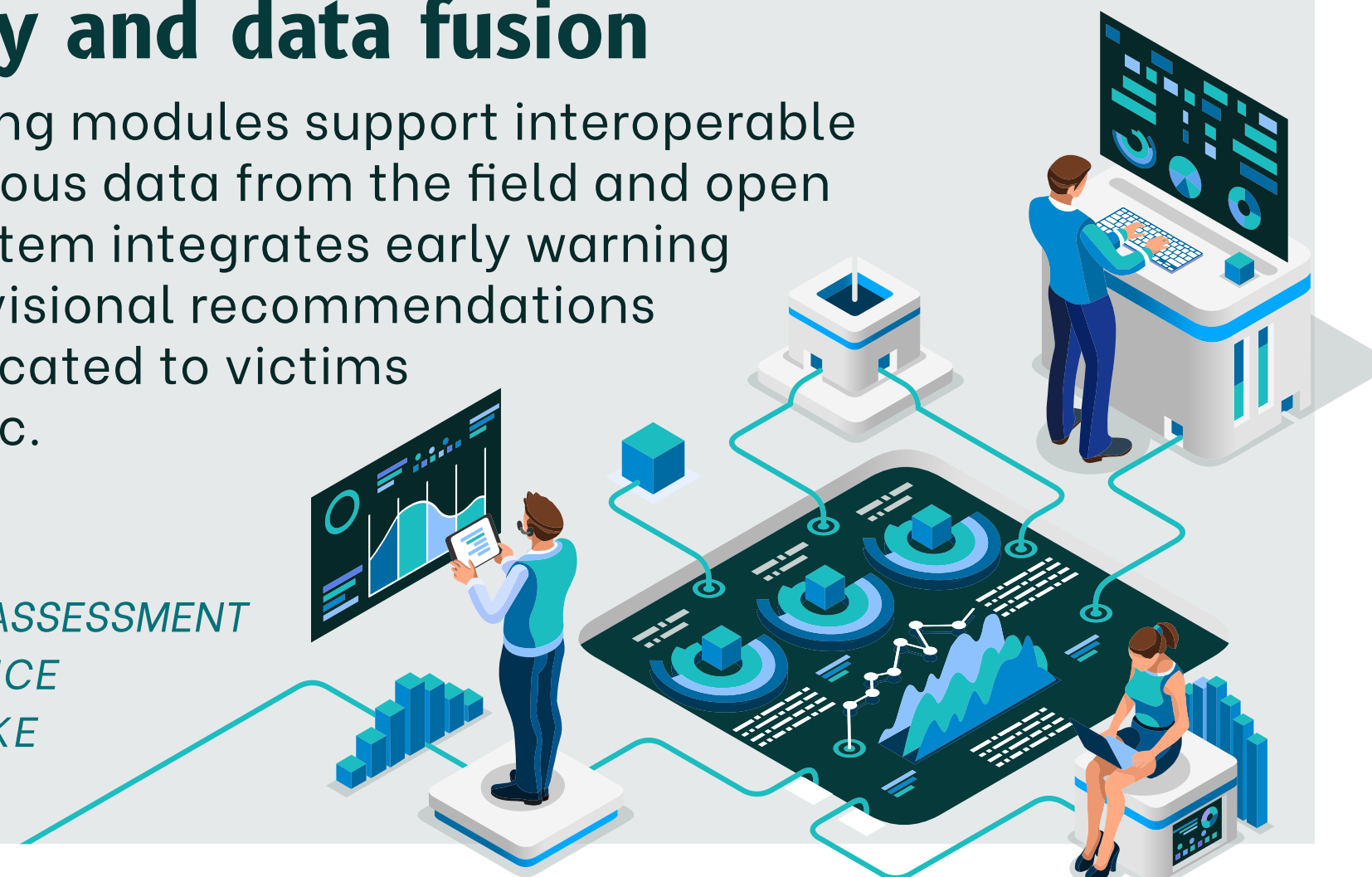


Interoperability and data fusion

Information-processing modules support interoperable access of heterogeneous data from the field and open data sources. The system integrates early warning notifications and provisional recommendations that can be communicated to victims and the general public.

DEVICES

EARLY WARNING AND RISK ASSESSMENT
DECISION SUPPORT SERVICE
INTEROPERABLE DATA LAKE
DATA LAYER



Multi-Agency collaboration

Integrated systems that provide a common operational picture and advance coordination and cross-team collaboration of emergency medical services and civil protection agencies

DEVICES

(C3/IMS)*
NG 112 (PSAP)**
SWAPP APP
SCENARIO BUILDER
AUGMENTED REALITY SERVICE



**PSAP = PUBLIC SAFETY ANSWERING POINT
*CC3/IMS = COMMAND, CONTROL AND COORDINATION & INCIDENT MANAGEMENT SYSTEM