



NIGHTINGALE

Novel Integrated Toolkit for Enhanced Pre-Hospital Life Support and Triage in Challenging and Large Emergencies

NIGHTINGALE

Advancing pre-hospital life support and triage



www.nightingale-triage.eu

- NIGHTINGALE Project
- @NGTriageEU
- NIGHTINGALE Project

Technical enquiries:

Project Coordinator

Dr Angelos Amditis (ICCS) - e: a.amditis@iccs.gr

Project Management

- Dr Eleftherios Ouzounoglou (ICCS) - e: eleftherios.ouzounoglou@iccs.gr
- Dr Dimitra Dionysiou (ICCS) - e: dimitra.dionysiou@iccs.gr
- Dr Spyros Athanasiadis (ICCS) - e: spyros.athanasiadis@iccs.gr

Technical Manager

Evangelos Sdongos (ASTRIAL) - e: e.sdongos@astrial.de

Media enquiries:

Carr Communications - e: nightingale-triage@carrcommunications.ie



The NIGHTINGALE Aim

NIGHTINGALE aims to upgrade pre-hospital life support and triage by creating innovative technological tools for emergency medical response. The tools will optimise current procedures and methods and enhance the operational capacities of emergency medical services and civil protection agencies in mass casualty incidents.

The NIGHTINGALE Results

NIGHTINGALE will offer intelligent, integrated, and interconnected tools and services. These technological solutions will be complemented with a commonly agreed operational framework that will be embedded seamlessly within the workflow.

The toolkit will offer

- Digital identification and traceability of affected people during mass casualty incidents
- AI-enabled fast diagnosis and prognosis, continuous monitoring and classification of medical conditions
- AI-enabled optimisation of assets and resources.
- Local and remote assessment and real-time monitoring of affected people which specifies their location and proximity to emergency teams
- AR application supporting information sharing and communication between emergency teams and with victims
- Innovative digitized training and scenario-building platform for first responders

NIGHTINGALE Tools

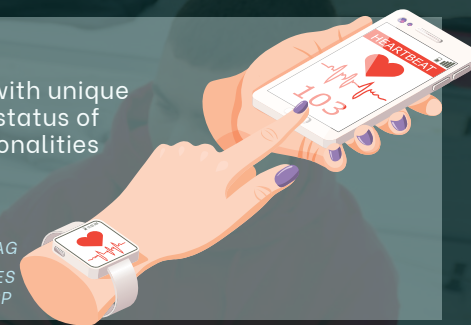
The Novel Integrated Toolkit for Emergency Medical Response will be provided to emergency medical services, non-medical civil protection personnel, volunteers, and citizens for extensive testing in the framework of a rich Training, Testing and Validation Programme

Triage and Vital Signs Devices

Devices and mobile applications that assist with unique identification of victims and show the triage status of patients. The devices offer hands-free functionalities and visualisation of vital signs of patients

DEVICES

- TRIAGE AND VITAL SIGNS DASHBOARD
- DIGITAL TRIAGE TAG
- VITAL SIGNS EARPLUG
- AUGMENTED REALITY GLASSES
- FIRST RESPONDER WEARABLE
- TRIAGE AND VITAL SIGNS APP



Intelligent Systems

Intelligent systems that enhance situational awareness and operational capacities of emergency teams. The systems provide information about mass casualty incident scenes quickly, supporting fast triage, diagnosis and prognosis of patients whilst allowing optimal utilization of resources and assets

DEVICES



- THERMOGRAPHIC SCANNING SYSTEM
- RESOURCES AND ASSETS OPTIMISATION SERVICE (EUNOMIA AND EDRA)
- DAMAGE CONTROL AND AI-BASED DIAGNOSIS AND PROGNOSIS (SMART PRO AND VITAL AI)
- UAV RAPID TRIAGING SYSTEM

Interoperability and Data Fusion

Information-processing modules support interoperable access of heterogeneous data from the field and open data sources. The system integrates early warning notifications and provisional recommendations that can be communicated to victims and the general public.

DEVICES

- PATIENT PREDICTIVE ASSESSMENT AND RISK ESTIMATION MODULE
- RECOMMENDATION ENGINE
- GLOBAL INCIDENT SITUATIONAL AWARENESS TOOL
- INTEROPERABLE DATA LAKE
- SOCIAL MEDIA SERVICE



Multi-Agency Collaboration

Integrated systems that provide a common operational picture and advance coordination and cross-team collaboration of emergency medical services and civil protection agencies

DEVICES

- SWAPP APP
- NG-PSAP** (C3I/IMS)*
- SCENARIO BUILDER



**PSAP = NEXT-GEN PUBLIC SAFETY ANSWERING POINT *C3I/IMS = COMMAND, CONTROL AND COORDINATION & INCIDENT MANAGEMENT SYSTEM

